



# INSPEX 4K

DIGITAL MICROSCOPE  
SYSTEMS





# INSPEX 4K

## ULTRA-HIGH-DEFINITION INSPECTION SYSTEM

Inspex 4K is an inspection solution which delivers four times the resolution of full HD inspection systems. Experience crystal clear ultra-high definition video imaging allowing you to see more detail than ever before.

A simple intuitive interface empowers the end user to inspect parts with ease, simplicity and comfort.

Speed up your inspection process by identifying defective parts faster, easier and in super high resolution. Inspex 4K offers high magnification, autofocus, manual focus, auto exposure, white balance and many more features.

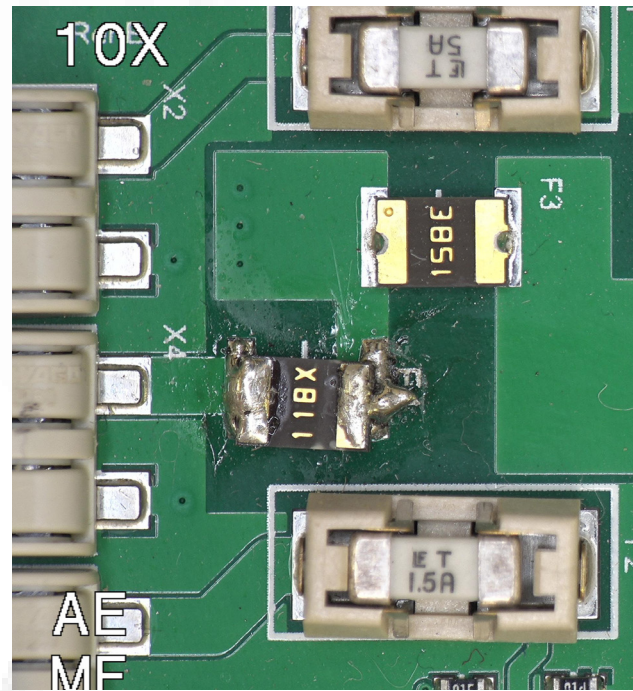
# FEATURES & BENEFITS

Instantly transform your manufacturing process

 **Ultra HD Resolution**  
3840 x 2160 pixels.

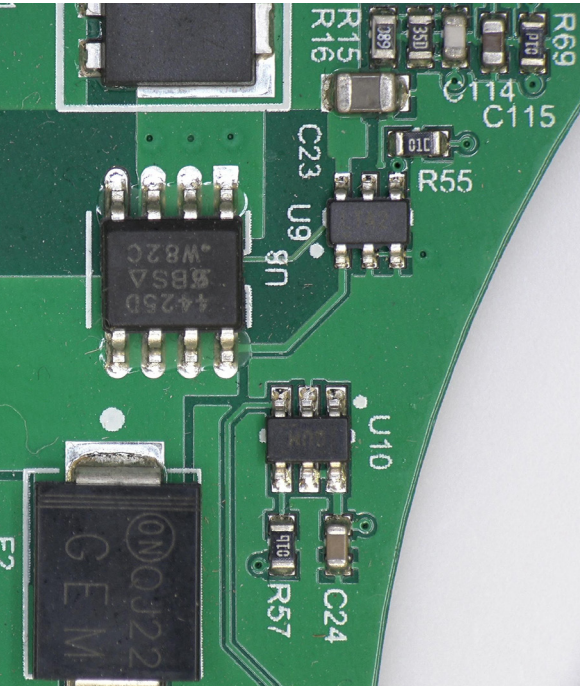
 **85x Optical Zoom**

 **170x Digital Zoom**



# FEATURES & BENEFITS

Instantly transform your manufacturing process



 Higher Colour Depth and Superb Image Quality

 Improve Defect Detection



 Ergonomic Digital Solutions

# FEATURES & BENEFITS

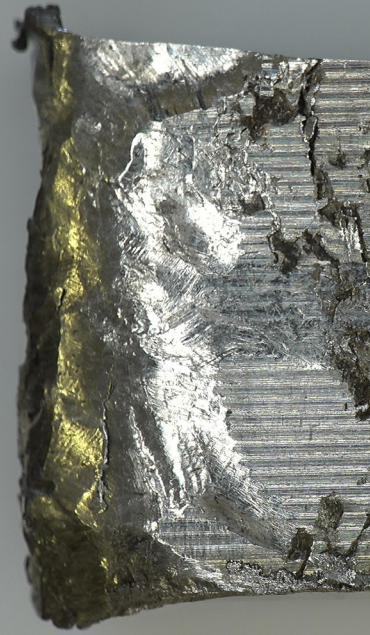
Instantly transform your manufacturing process

 Low Video Latency

 Reduce Production Waste

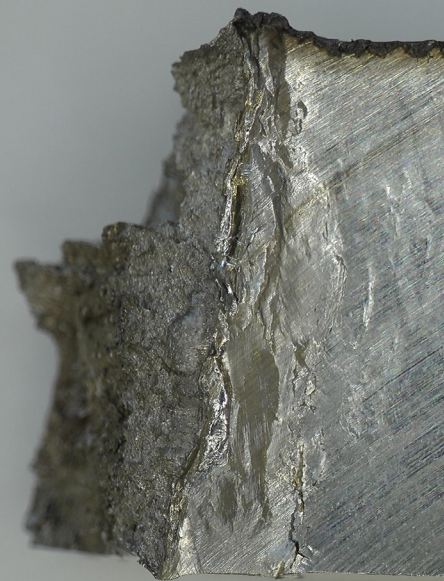
13X

AE  
MF



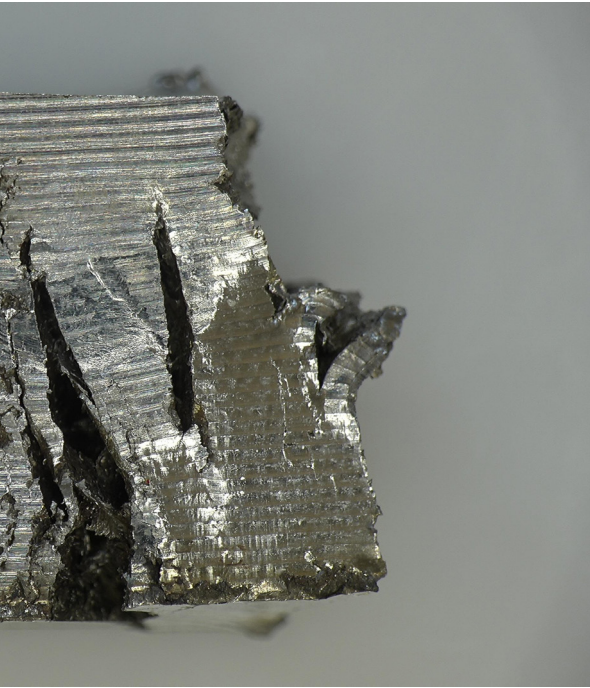
13X

AE  
MF



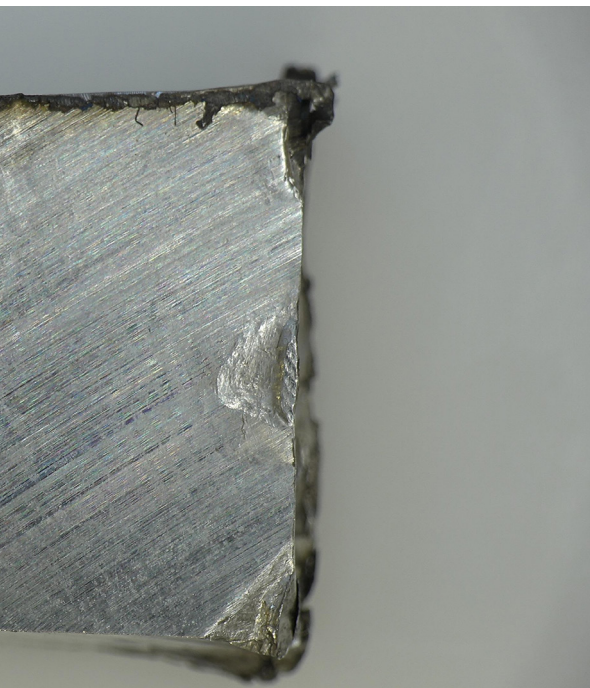
# FEATURES & BENEFITS

Instantly transform your manufacturing process



 **Improve Throughput**

 **Increase Efficiency**



## WHAT OUR CUSTOMERS SAY

**Creganna Medical - TE  
Connectivity.**

**Pádraig McVeigh**

**“Ash have provided excellent support from problem classification, through vision system development, right to fixturing and set-up support.**

**The speed of the response and ability to meet our tight timeline was very impressive. The availability and assistance from team members of all levels, from Sales to Engineering, was invaluable to our team.”**



**Fly Evidence**  
**Andrew**

**"Ash Technologies provides a very high standard of both product and customer care - FlyEvidence highly recommends their products".**

# Included System Components



# INSPEX 4K

FI806 - 006



## LENSES

+10 Plan 1x



## LIGHTS

Diffused LED DomeLight



## OTHERS

27" Monitor

# Optional System Components



## LENSES

+10 Plan 1x  
AI100-055



## LIGHTS

Diffused LED DomeLight  
AI100-045

Polarised Ringlight  
AI801-423

UV Lighting  
AI801-421



## CONTROLLERS

KPIII Keypad  
FI806-004



## STANDS & STAGES

Remium Track  
Stand  
AI100-043

Premium Illuminted  
Track Stand  
AI100-040

## OTHERS



27" Monitor  
MR100-060

# Technical Specifications

## Magnification

	Lens Type	10 Plan 1x
<b>Optical</b>	Magnification Range	9 - 85
	Min FOV	44.7 - 25
	Max FOV	8.55 X 5
<b>Digital</b>	Magnification Range	86D - 170D
	Min FOV	8.5 X 4.95
	Max FOV	4.3 X 2.5
	Working Distance/mm	55
	Depth of Field/mm	min(11) max(0.2)
	Video Latency	40(25Hz) / 33(30Hz)

## Technical Specifications

### INSPEX 4K

Zoom Range	9 - 170
Camera Res	3840 × 2160
Monitor Connections	HDMI/DVI
Monitor Requirement	4K
Input/Output	HDMI (Output)
	USB 2.0 (x1)
	Mini USB (x1)
	General Purpose I/O (x3)
	DC Power Jack 24V
Internal Storage	N/A
Image Capture	Capture Card to PC
Power	24W
Dimensions	216mm x 165mm x 170mm
Weight	<b>1.75kg</b>
Operating Temp	Storage -10 to +60
	Operating +5 to +40



ASH HQ - Ireland  
B5, M7 Business Park,  
Naas, Co. Kildare  
W91 P684  
+353 (0) 45 88 22 12

ASH MALAYSIA  
ENDOMATRIX (M) SDN BHD  
No.51-5, Block G, Dataran Prima,  
Jalan PJU 1/37, 47100 Puchong,  
Selangor, Malaysia.  
+ 603-78031145

ASH UK  
Covert Farm, Long  
Lane,  
Easte Haddon,  
Northamptonshire  
NN6 8DU  
+44 (0) 7592 523 767



**reddot award**  
product design  
winner



[sales@ashvision.com](mailto:sales@ashvision.com)

Images, descriptions and technical data subject to change. Ash reserve the right to make changes without notice.



Printed on recycled paper

All systems are now multilingual.