



**ACOUSTIC  
CONTROL  
SYSTEMS**

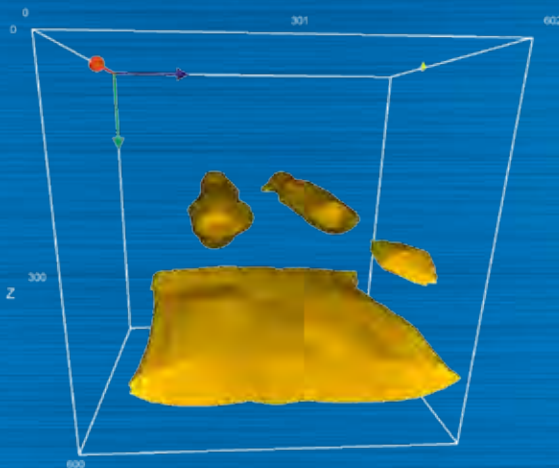
ENDOMATRIX (M) SDN BHD  
Blk B-G-28, Kompleks Suria Kinrara, Persiaran Kinrara Sek 3,  
Taman Kinrara Sek 3, 47100 Puchong, Selangor, Malaysia  
PHONE: +6 (03) 91073517 | FAX: +6 (03) 9101 4814  
www.endomatrix.com.my | sales@endomatrix.com.my

ACS-SOLUTIONS GMBH  
SCIENCE PARK 2, 66123 SAARBRÜCKEN, GERMANY  
PHONE: +49 (0) 681-96592270 | FAX: +49 (0) 681-96592280  
WWW.ACS-INTERNATIONAL.COM | INFO@ACS-INTERNATIONAL.COM



# A1220 MONOLITH 3D

## MULTI-FEATURED ULTRASONIC CONCRETE TESTING INSTRUMENT



- Pulse-echo & thru-transmission data acquisition mode
- Cross-functional instrument for multiple applications
  - => Thickness gauge
  - => Flaw detector
  - => 3D-tomograph
  - => Pulse velocity tester
- New generation of wear-proof DPC transducers
- Integral assessment using 3D imaging by **INTROVIEW®** software

# Specification:

Measuring range	0 to 1.000 mm*
Time of continuous operation	≥ 8 hours**
Analogue band width of electronic unit	10 to 100 KHz
Analogue band width of DPC transducers	10 to 100 KHz
Nominal transducer frequency	50 KHz
Number of transducers in antenna	24 (antenna array M2502)
Further optional transducers for Ultrasonic Pulse velocity testing:	S1802 (single DPC shear wave probe) S1803 (single DPC longitudinal wave probe) M2102 (DPC Array shear wave probe) M2103 (DPC Array longitudinal wave probe)



# Special Features:

- Couplant-free UT measurement on rough / uneven surfaces
- 3D data collection and processing in MAP-mode
- Extraordinary thru-transmission range of up to 4 meters
- Compatibility with other low frequency transducers
- USB interface for inspection data transfer



# 3D Software INTROVIEW®:

- 3D-View modes:
  - ISO-Surface
  - Texture Mapping
  - Maximum Intensity Projection
- 2D-View modes:
  - Panorama B-, C-, D-Scan
  - Cutting plane / gated volume
- Compatibility with other ACS Instruments (A1220 MONOLITH, A1040 MIRA)



# Delivery Kit:

- A1220 MONOLITH electronic unit
- Power adapter for AC mains 220/15V
- 220V/15V Power supply unit
- Cable USB A - Micro B
- Double cable LEMO-LEMO 1.2 m
- Antenna array M2502
- 3D Software INTROVIEW®
- Hard shell carry case

\* Material & application dependent \*\* Operation mode dependent



**ACOUSTIC  
CONTROL  
SYSTEMS**

ENDOMATRIX (M) SDN BHD  
Blk B-G-28, Kompleks Suria Kinrara, Persiaran Kinrara Sek 3,  
Taman Kinrara Sek 3, 47100 Puchong, Selangor, Malaysia  
PHONE: +6 (03) 91073517 | FAX: +6 (03) 9101 4814  
www.endomatrix.com.my | sales@endomatrix.com.my

ACS-SOLUTIONS GMBH  
SCIENCE PARK 2, 66123 SAARBRÜCKEN, GERMANY  
PHONE: +49 (0) 681-96592270 | FAX: +49 (0) 681-96592280  
WWW.ACS-INTERNATIONAL.COM | INFO@ACS-INTERNATIONAL.COM