



INSPEX HD TABLE

HIGH-DEFINITION
DIGITAL MICROSCOPE



INSPEX HD TABLE

HIGH-DEFINITION DIGITAL MICROSCOPE



A portable full HD solution for rapid inspection in manufacturing plants. Fully integrated, compact stand allows it to be used in any part of the production environment. Experience Full HD image quality with no delay. The ideal solution for those wishing to digitise and simplify their inspection process.

Ergonomically designed, allowing for less operator fatigue and improved production efficiency. Simple, fast, high-quality inspection. Ideal for repair, rework, assembly and quality control in any manufacturing industry.

FEATURES & BENEFITS

Instantly transform your production process with Inspex HD Table

Compact and Portable

Fully portable, compact design with a small footprint.

Experience the power of the Inspex HD wherever you need it with its simple configuration. Simply plug in, switch on, and inspect.

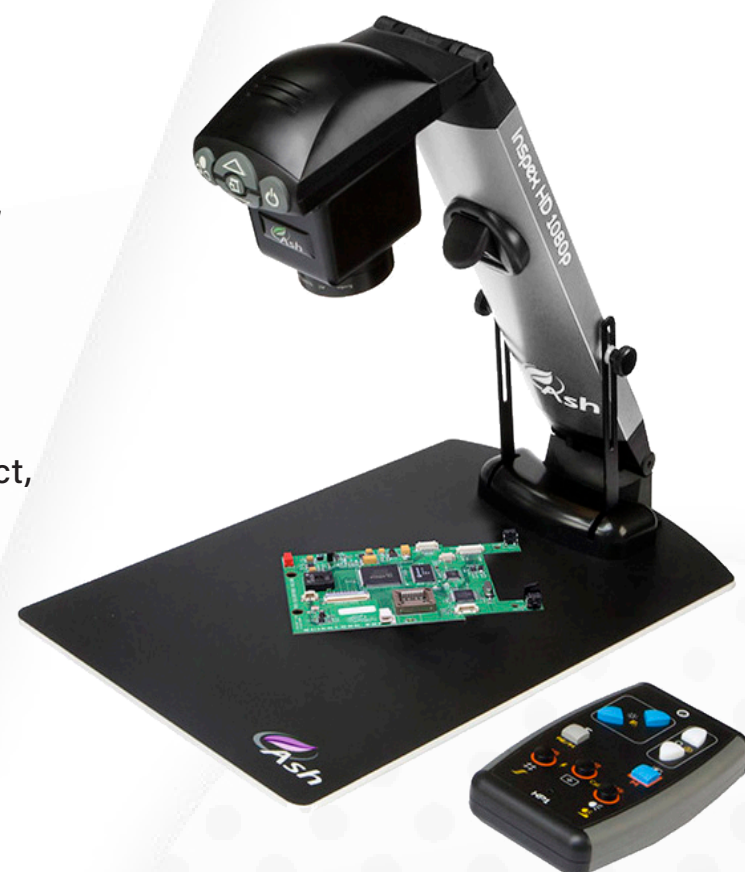
Superb Image Quality

Accurate and detailed inspection with superb HD image resolution, colour reproduction, contrast and resolution and integrated LED illumination.

Zero Video Latency

Real-time movement under Inspex HD, resulting in a more efficient inspection process.

View parts in real time with no video lag, allowing you to comfortably inspect, rework, modify or assemble anything.



FEATURES & BENEFITS

Instantly transform your production process with Inspex HD Table

Image Capture

Easy documentation and traceability for accurate quality control records. Store images directly to USB. Simply plug and go!

Working Distance

SLWD (Super Long Working Distance) objective lens for extra-large part viewing.

Wide Dynamic Range

View dark and bright areas simultaneously without saturation. Wide Dynamic Range uses overlapping multiple exposures depending on the saturation level of each pixel.

On Screen Dimensioning

Integrated, real time, on screen patented measuring grids and cursors provide a simple and effective way to measure without a PC.



Included System Components



LENSES

+5 Lens



OTHERS

Memory Stick, HDMI Cable

Optional System Components



LENSES

+3 Lens

AI 280-129

+4 Lens

AI 280-125

+5 Lens

AI 280-123

+10 Lens

AI 280-124

Lens Polarizing
Filter

AI 280-145

Lens Protector

AI 100-061



LIGHTS

8-Point LED Ring Light

AI 100-012

Polarizer for 8-Point LED
Ring Light

AI 100-000

Diffused LED Dome
Light

AI 100-001

LED Fibre Optic
Illuminator
with Dual Gooseneck

AI 100-033

UV Ring Light

AI 100-026 220V 254nm

AI 100-005 220V 375nm

AI 100-035 110V 254nm

AI 100-034 110V 375nm



CONTROLLERS

KP1 External Keypad

AI 801-414

Required to activate
dimensioning grids

Footswitch

AI 801-415



OTHERS

Ash PC Capture

AI 100-052

24" Monitor

AI 801-416

Hard Case

AI 801-561

Soft Case

AI 801-566



STANDS & STAGES

XY Stage

AI 100-010

▶ Track Stand Vesa
Flex Cam

AI 100-028

▶ Track Stand Vesa
& Vesa Short Flex
Cam

AI 100-019

▶ Track Stand Vesa
Short

AI 100-020

XY Stage for
Uplight

AI 100-011

▶ Uplight Track Stand
Vesa & Vesa Short
Flex Cam

AI 100-023

Oblique Tilting
Stage

AI 801-414

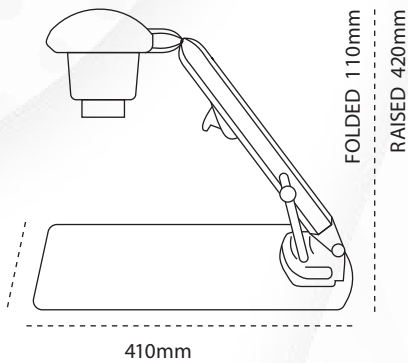
Height Adjustable
Stage

AI 801-413

XY Stage Large

AI 100-057

Technical Specifications



Magnification

| Lens (Dioptre) (mm) | 2 | 3 | 4 | 5 | 10 |
|---|-----------------------|-------------------|-------------------|------------------|------------------|
| Max Height (mm) | 500 | 333 | 250 | 200 | 100 |
| Min Height | 405 | 280 | 205 | 170 | 85 |
| Minimum Magnification* | 1.1 | 1.3 | 2 | 2.5 | 4 |
| Maximum Magnification* Optical/ Digital | 29/57 | 36/71 | 50/98 | 62/122 | 121/237 |
| Field of view at minimum mag. (mm) | X: 595 Y: 334 | X: 400 Y: 225 | X: 280 Y: 164 | X: 231 Y: 136 | X: 60 Y: 50 |
| Field of view at maximum mag. (mm) | X: 20/10 Y: 11/5.5 | X: 14/7 Y: 8/4 | X: 10/5 Y: 6/3 | X: 8/4 Y: 5/2 | X: 5/2 Y: 3/1 |
| Maximum depth of field | 176 | 120 | 106 | 78 | 57 |
| Minimum depth of field | 5 | 4 | 1 | .50 | .20 |

Technical Specifications

| | Table |
|---------------------------------|---|
| Zoom Range (with supplied Lens) | 4D lens – 2x - 98x |
| Camera Resolution | HD 1080p, 1920 x 1080 at 50/60 Hz |
| Monitor Connections | HDMI / DVI |
| Monitor Requirements | HD Ready / Full HD (Recommended) |
| Power | 8 Watts |
| Dimensions | Table 240mm x 410mm Folded Height 110mm, Raised Height 420mm |
| Weight | 2.5kg |
| Operating Temperature | Storage -10°C to +60°C Operating +5°C to +40°C |
| Image capture | USB 2.0 highspeed |



ASH HQ - Ireland
B5, M7 Business Park,
Naas, Co. Kildare
W91 P684
+353 (0) 45 88 22 12

Malaysia
ENDOMATRIX (M) SDN BHD
No.51-5, Block G, Dataran Prima,
Jalan PJU 1/37, 47100 Puchong,
Selangor, Malaysia.
P: +603-78031145

ASH UK
Covert Farm, Long Lane,
Easte Haddon,
Northamptonshire
NN6 8DU
+44 (0) 7592 523 767



red dot award
product design
winner



sales@ashvision.com
www.ashvision.com

Images, descriptions and technical data subject to change. Ash reserve the right to make changes without notice.



Printed on recycled paper