



**ACOUSTIC  
CONTROL  
SYSTEMS**

EndoMatrix (M) Sdn Bhd  
No. 51-5, Block G, Dataran Prima, Jalan PJU 1/37,  
47301 Petaling Jaya, Selangor Darul Ehsan, Malaysia.  
Phone: 03-7803 1145 | Fax: 03-7496 8645  
sales@endomatrix.com.my | www.endomatrix.com.my

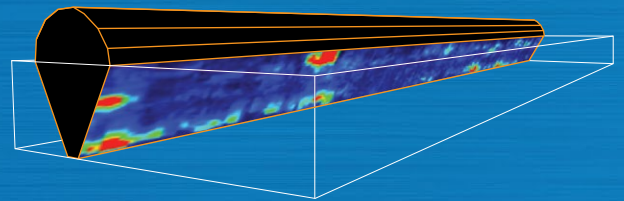
ACS-SOLUTIONS GMBH  
SCIENCE PARK 2, 66123 SAARBRÜCKEN, GERMANY  
PHONE: +49 (0) 681-96592270 | FAX: +49 (0) 681-96592280  
WWW.ACS-INTERNATIONAL.COM | INFO@ACS-INTERNATIONAL.COM

# THE ULTIMATE TFM ULTRASONIC FLAW DETECTOR A1550 INTROVISOR



## Flaw Visualization by INTROVIEW® Software

- 3D imaging of UT data
- B, C & D projection images with quantitative flaw evaluation
- Versatile reporting capability



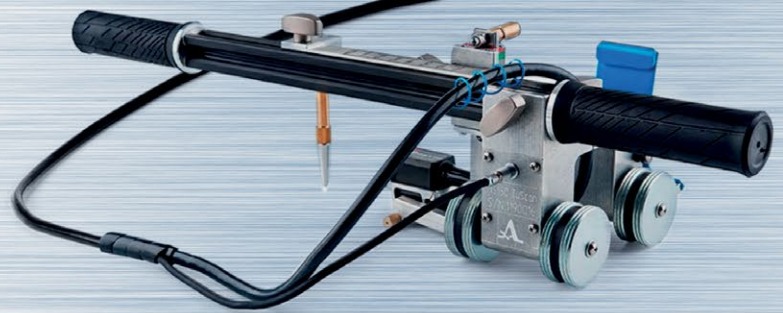
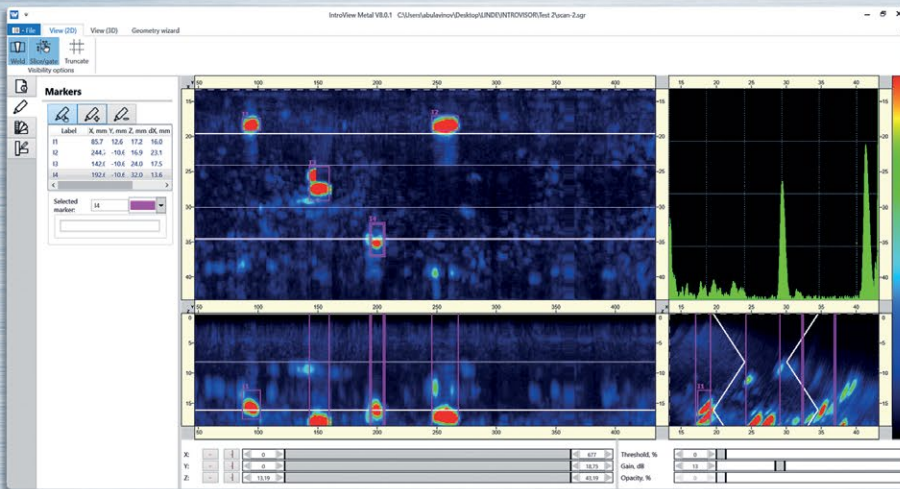
- Total Focusing Method using Multi-SAFT technology
- Semiautomatic sensitivity calibration by standard calibration blocks
- B, C & D-Scan imaging capability
- Conventional A-Scan view in single channel flaw detector mode and phased array mode

## Special features:

- Multi-SAFT technology / multiple reflection reconstruction for accurate flaw visualization and analysis
- Easy-to-use operation due to semiautomatic sensitivity calibration with standard calibration blocks
- 2D spatial sensitivity adjustment to find and evaluate small flaws according to common codes and size flaws and position correctly to the surface of the test piece
- Novel micro-wedge transducer technology with zero multiple wedge reflections and artifact-free imaging

## Specification:

Phased Array data processing technique	Total Focusing Method
Number of array elements / channels	16
Operation frequencies	1,0; 1,8; 2,5; 4,0; 5,0; 7,5; 10,0 MHz
Dynamic range	100 dB
Display resolution / type	640 x 480 / TFT
Operation time with battery, not less than	8 h
Dimensions of the electronic unit	260x166x80 mm
Weight of the electronic unit	1,8 kg
Operation temperature	from -10 to +55 °C



## Delivery kit:

- A1550 IntroVisor – TFM ultrasonic flaw detector – tomograph
- Phased Array transducers:
  - M9065 (4 MHz shear wave, pitch 2.5 mm)
  - M9060 (4 MHz longitudinal wave, pitch 2.5 mm)
  - M9170 (4 MHz shear wave, pitch 1.6 mm)
- Single crystal transducers:
  - S3568 (2.5 MHz, normal beam, crystal diameter 10 mm)
  - S5182 (2.5 MHz, angle beam 45 degree, crystal diameter 12 mm)
  - S5096 (5 MHz, angle beam 45 degree, crystal diameter 6 mm)
- LEMO 00 – LEMO 00 single cable 1,2 m
- USB A – Mini B cable
- Power adaptor with cable
- Calibration block V2/25
- Ultrasonic Couplant, bottle 4 oz.
- Soft cover & hard case
- Optional scanner: MS150 TuScan

## 3D INTROVIEW® Software

- Weld configuration wizard for common weld preparations
- 2D-View modes: B, C & D-Scan / Cutting plane, gated volume
- Synchronized 2D cursors for interactive flaw sizing
- 3D-View modes: ISO-Surface Texture Mapping Maximum Intensity Projection