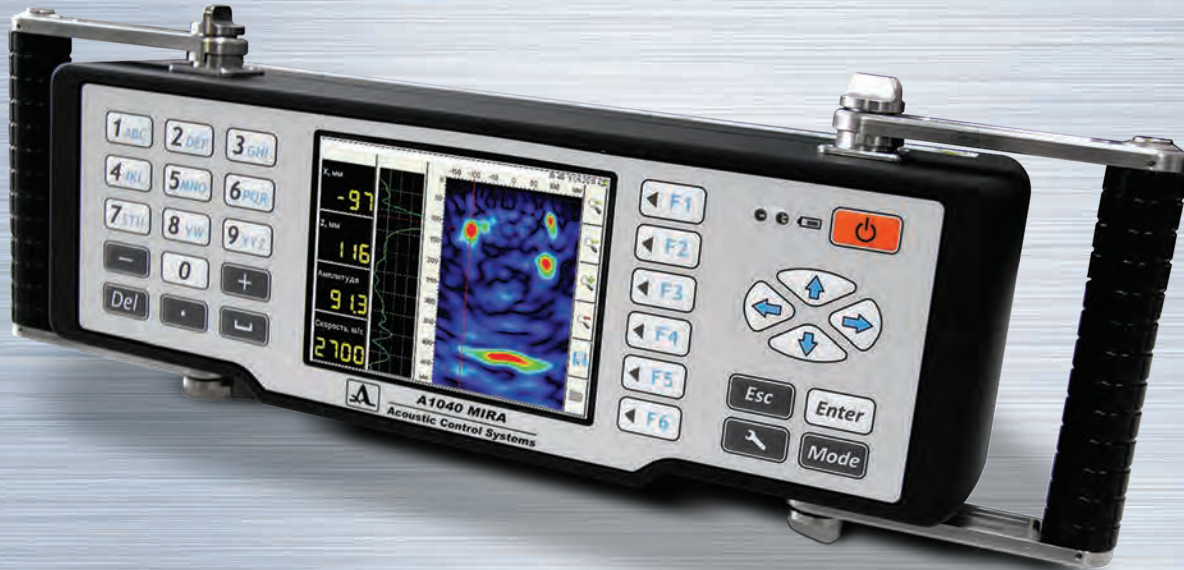




**ACOUSTIC  
CONTROL  
SYSTEMS**

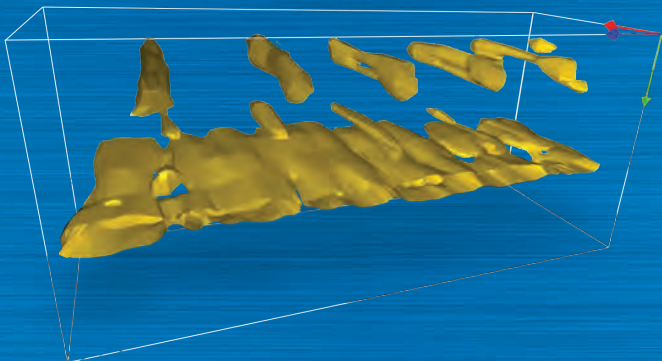
EndoMatrix (M) Sdn Bhd  
No. 51-5, Block G, Dataran Prima, Jalan PJU 1/37,  
47301 Petaling Jaya, Selangor Darul Ehsan, Malaysia.  
Phone: 03-7803 1145 | Fax: 03-9101 4814  
sales@endomatrix.com.my | www.endomatrix.com.my

ACS-SOLUTIONS GMBH  
SCIENCE PARK 2, 66123 SAARBRÜCKEN, GERMANY  
PHONE: +49 (0) 681-96592270 | FAX: +49 (0) 681-96592280  
WWW.ACS-INTERNATIONAL.COM | INFO@ACS-INTERNATIONAL.COM



# A1040 MIRA

## PORTABLE HIGH-END ULTRASONIC TOMOGRAPH FOR REINFORCED CONCRETE TESTING



- Extraordinary penetration depth
- Outstanding near-field and far-field resolution
- New generation of wear-proof DPC transducers

### Visualization by INTROVIEW®

- Integral assessment using 3D imaging
- Novel crack sizing functionality

## Specification:

Number of transducers in antenna	48 (12 groups x 4 elements)
Measuring range	10 to 2.500 mm*
Analogue band width	≥ 8 hours**
Analogue band width	10 to 100 KHz
Nominal transducer frequency	50 KHz
Safety rated	IP54
Physical size of instrument	370x150x145 mm

## Special Features:

- One-piece design with integrated anti-glare TFT color display
- 3D data collection and processing in MAP-mode
- German TÜV certified methodology for reinforcement and duct channels detection



## 3D Software INTROVIEW®:

- 3D-View modes:
  - ISO-Surface
  - Texture Mapping
  - Maximum Intensity Projection
- 2D-View modes:
  - Panorama B-, C-, D-Scan
  - Cutting plane / gated volume
- Compatibility with other ACS Instruments (A1220 MONOLITH, A1040 MIRA)



## Delivery Kit:

- A1040 MIRA electronic unit
- 220V/15V Power supply unit
- Cable USB A - Micro B
- Checking sample
- Transport case
- 3D Software INTROVIEW®

\* Material & application dependent \*\* Operation mode dependent